

coming soon... the NEW construction general permit

The Monthly Dirt

A monthly newsletter on the California
Construction General Permit



Part 1 of a 4 Part Series

**“The secret of change is to focus all of your energy not on fighting [for] the old, but on building the new”
-Socrates**

When are all of these changes going to occur? Well, it is hard to say for sure; but the Water Board meeting to consider adoption of the permit reissuance is July 19, 2022. If the permit is adopted at that meeting, it most likely will become effective on **July 1, 2023**. However, existing permittees will be allowed to remain under the conditions of the current CGP until July 1, 2026. That includes anyone who submits a Notice of Intent (NOI) and is issued a WDID number by June 30, 2026. Dischargers who file a NOI on or after July 1, 2026 will need to comply with the newly adopted CGP.

NEW ROLES AND TASKS: The proposed CGP introduces some new, or at least redefined, roles in the implementation of the Permit. One subtle change that seemed to jump out at us was a greater emphasis on the role of the Discharger. The term is defined in Attachment B as “a person as defined in [Water Code, section 13050\(c\)](#), which includes companies and governmental bodies, subject to this General Permit. The discharger is responsible for compliance with this Permit, including work done by QSDs, QSPs, and QSP delegates.” Although, it is not a new term or role, the Permit writers seemed to make more of a distinction between Discharger and Legally Responsible Person (LRP). The proposed Permit assigns the

As evidenced by the recent release of the [Proposed Statewide Construction Storm Water General Permit Reissuance](#), **change is coming!** At least it is going to happen for QSPs, QSDs, and those having to comply with the Construction General Permit (CGP). In this month’s edition (and the next three as well) of the **Monthly Dirt**, we’re going to examine some of the proposed changes, which include new roles and tasks for QSPs, QSDs, and delegated inspectors; new definitions for storm events and numeric action level exceedances; new monitoring requirements; new BMP requirements; new reporting and documentation requirements; and new regulated constituents and activities.

Discharger responsibility for all site activity affiliated with compliance and non-compliance including work done by QSDs, QSPs, and QSP delegates. Perhaps in an effort to make things more consistent between permits and on SMARTS, the Approved Signatory is now titled “Duly Authorized Representative” (DAR). Other than new names and clarifying the distinctions between them, the roles and responsibilities for these Permit players remain largely the same. **QSPs and QSDs, on the other hand, keep their titles, but their roles and assigned tasks change quite a bit in this Permit.** The QSD is still responsible for pollutant assessment and preparing and updating a SWPPP. But with this Permit, the QSD will be donning boots and hard hat and spending more time in the field by performing on-site inspections:

1. Within 30 days of construction activities commencing on a site;
2. Within 30 days of a discharger replacing the QSD;
3. Twice annually, once August through October and once January through March;
4. Within 14 calendar days after a numeric action level exceedance; and,
5. Within the time period requested in writing from Water Board staff.

QSPs must perform inspections:

1. At least once every calendar month (when delegating weekly inspections to a trained delegate);
2. Within 72 hours prior to a forecasted Qualifying Precipitation Event (QPE) to inspect areas of concern to verify the status of any deficiencies, BMPs, or other identified issues at the site.
3. Within 14 days after a numeric action level exceedance; and,
4. Prior to the submittal of a Notice of Termination or Change of Information (for acreage changes) of all or part of a site.

Who can perform specific inspections?

Inspection Type	Qualified SWPPP Developer (QSD)	Qualified SWPPP Practitioner (QSP)	Delegate
Weekly	X	X	X
Pre-Precipitation Event	X	X	
During Precipitation Event	X	X	X
Post-Precipitation Event	X	X	X
Inactive Projects (14 days after Change of Information approval)	X		
Inactive Projects (Monthly Inspection)	X	X	X
QSD Responsibilities	X		
QSP Responsibilities	X	X	

California Water Boards

In addition, the QSP is required to review work performed by trained delegates including visual inspections, sampling, BMP implementation activities, and other required tasks listed in the SWPPP. If a QSP opts to delegate tasks to others, they shall provide the following training:

- Foundational training for all delegates regarding storm water compliance roles and responsibilities, forecast information, and documentation and reporting procedures; and,
- Site-specific training regarding visual inspections, sampling procedures, and/or SWPPP and BMP implementation activities relevant to the delegate's assigned responsibilities.

The name, email, and phone number for all delegated inspectors must be maintained in a training log that is uploaded onto SMARTS as an attachment to the SWPPP.

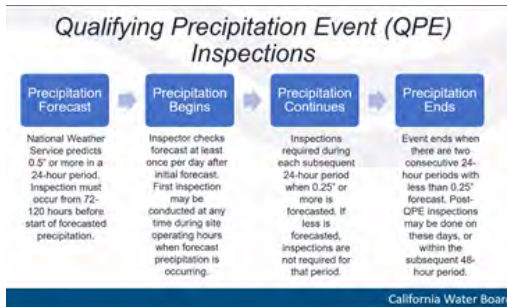
NEW DEFINITIONS:

QSPs and QSDs were not the only ones to have a change of roles. With the redefining of a "Qualifying Precipitation Event" (QPE), the rain gauge got a serious demotion in this Permit. **A qualifying precipitation event is any weather pattern that is forecast to have a 50% or greater Probability of Precipitation (PoP) and a Quantitative Precipitation Forecast (QPF) of 0.5 inches or more within a 24-hour period. The event begins with the 24-hour period when 0.5 inches has been forecast and continues on subsequent 24-hour periods when 0.25 inches of precipitation or more is forecast. The event ends when there are two sequential 24-hour periods with less than 0.25 inches of precipitation forecast for each period.** However, the rain gauge was not entirely let go from the job. It is still required for recording rainfall measurements during site inspections but its role in determining qualifying storm events has been terminated.

There was also a significant change in the definition of a "Numeric Action Level (NAL) exceedance". An NAL exceedance will no longer be based on a daily site-wide average of all discharge monitoring data, but it is now defined as the "numerical average of three samples taken during each day of a qualifying precipitation event at each sample and/or discharge location." The NAL levels remain the same (turbidity >250 NTUs and pH below 6.5 or above 8.5), but under the proposed permit, a project site may now have an NAL exceedance at any of its discharge points.

NEW MONITORING REQUIREMENTS:

To find the monitoring changes, you have to look in a different location in the Permit. All three risk levels for traditional projects are now contained in [Attachment D](#). Linear Utility Project (LUP) requirements are in [Attachment E](#). **LUPs had a significant change in their monitoring requirements** with the shift from needing to do daily inspections to an inspection program similar to traditional projects with weekly baseline and pre, during, and post-QPE inspections.



Rain Event Action Plans (REAPs) have been removed from the proposed permit, however, much of the REAP requirements have been rolled into the pre-QPE inspection. **See how much of the following sounds like the old REAP requirements.**

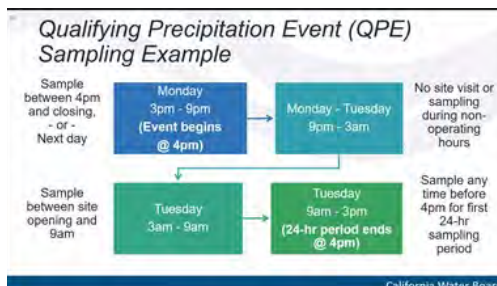
A QSP (not a delegated person) must conduct a pre-QPE inspection within 72 hours prior to any weather pattern that is forecasted to have a 50% or greater PoP of 0.5 inches or more in a 24-hour period. Precipitation forecast information shall be obtained from the National Weather Service Forecast Office and shall be included as part of the inspection checklist weather information. If extended forecast precipitation data (greater than three days) is available from the National Weather Service, the pre-precipitation event inspection may be done up to 120 hours in advance. The pre-QPE inspection shall include an inspection of the following:

- All stormwater drainage areas to identify leaks, spills, or uncontrolled pollutant sources and when necessary, implement appropriate corrective actions to control pollutant sources.
- All BMPs to identify whether they have been properly implemented in accordance with the SWPPP and when necessary implement appropriate corrective actions to control pollutant sources.
- All stormwater storage and containment areas to detect leaks and check for available capacity to prevent overflow.

Sure sounds like a REAP to us, but we'll call it a pre-QPE inspection.

Note that the proposed permit provides more time to perform pre and post-QPE inspections; up to 120 hours for pre and 96 hours for post inspections.

Traditional Risk Level 2 & 3 dischargers are



required to collect and analyze for pH and turbidity a minimum of 3 grab samples from all discharge locations per 24-hour period of a QPE. Remember, the new QPE definition is based solely on the forecast of an initial day of >=50% PoP with >=0.5" of precipitation and subsequent qualifying days have to have a forecast of >=0.25". Forecasts for two consecutive days of <0.25" means the QPE has come to an end.

LUPs have similar sampling requirements except not every discharge point must be sampled. LUPs must sample at one or more locations representative of the project's construction activities.

Non-visible pollutant sampling requirements changed from "2 & 2" - meaning two samples collected (one of the affected area and a comparison sample from an unaffected area) within the first two hours of discharge to collecting "at least one sample, within 8 hours, from each discharge location hydraulically down-gradient from the observed triggering event or condition."

NEW REPORTING & DOCUMENTATION REQUIREMENTS:

While the annual report is still due by September 1st of each year or when submitting a Notice of Termination, there are some changes to the reporting requirements. Under the proposed CGP, all sampling data must be submitted via an Ad Hoc Report on SMARTS within 30 days of the completion of the precipitation event or within 10 days of a NAL exceedance. This applies to traditional Risk Levels 2 and 3 dischargers, as well as LUP Types 2 and 3. The requirement to upload onto SMARTS photos from every third storm for LUPs was removed from the proposed permit.

All dischargers who perform non-visible pollutant sampling must upload analytical results onto SMARTS within 30 days of obtaining the results or within 10 days if there was a NAL exceedance.

We told you there's a lot of change coming. Next month we'll look at the Permit changes regarding BMP implementation.

Please contact us if you have any questions ...

The Monthly Dirt

Newsletter Editor:

John Teravskis, QSP/QSD, CPESC, WPCM, ToR
jteravskis@wgr-sw.com

(209) 334-5363 ext. 110 or (209) 649-0877

Technical Questions about Environmental Compliance? Call ...

Mike Lewis, QSP, CESSWI, WPCM

(Northern California) mlewis@wgr-sw.com,

(209) 334-5363 ext. 116

Gray Martz, QSP/QSD, PG (Southern California)
jgmartz@wgr-sw.com, (562) 799-8510 ext. 1002

IN-PERSON TRAINING

JUNE 9, 2022

BMP ROUNDUP

A WESTERN THEMED HANDS-ON BMP LEARNING EXPERIENCE

\$250/person



FORGE

TRAINING FOR CONTRACTORS AND QSPS
FEATURING SIX HOURS OF TRAINING ON HOW TO INSTALL BMPs. LOCATED AT THE WGR LODI CONSTRUCTION SANDBOX. QUALIFIES FOR 5 PDHS AND INCLUDES A BBQ LUNCH. VISIT WGR-SW.COM/TRAINING TO REGISTER.



QSP SERVICES

Providing QSP services & oversight for southern, central, and northern California.

contact us for a quote.

FOR NEW CLIENTS, WE'RE OFFERING FREE ACCESS TO OUR INSPECTION APP (VALUED AT \$500).

jteravskis@wgr-sw.com | 209.334.5363 x110 | wgr-sw.com

NEW

CALTRANS WPCM 8 HOUR TRAINING CLASS



On January 21 2020, Caltrans issued a Revised Standard Specification (RSS) 13-1.01D, detailing the requirements for Water Pollution Control Managers (WPCM) to complete required training prior to working on Caltrans projects. All projects awarded after July 5, 2020 include this RSS.

To become a WPC manager, alternate WPC manager, or assistant WPC manager for Caltrans construction projects, you must submit a certificate of completion of an 8-hour Water Pollution Control Manager training course.

▶ **SIGN UP TODAY** ◀
@ www.veruxinc.com

Click on "Book Training Class" to sign up.

Please call or email Bob Shults for additional details or to request a class in your facility or area.

 info@veruxinc.com

 916.850.5758

Even with current COVID protocols, safe in-person training is available at the Verux training facility. Alternatively, please contact Bob Shults about traveling to your location.

“

Best storm water class I have attended. Bob knows Caltrans and kept us engaged for eight hours, which is tough to do!

—Dave Cox, Estimator/Project Manager
George Reed, Inc.

Bob's WPCM training course is exceptional! Bob is very engaging and his extensive experience in construction storm water management resonates with our engineers.

—Candice Longnecker
Valley Region Environmental Manager, Granite Construction

”

Bob Shults integrates 20+ years of construction management and storm water consulting experience into this training. Hands on exercises and real world examples add value to the class throughout.

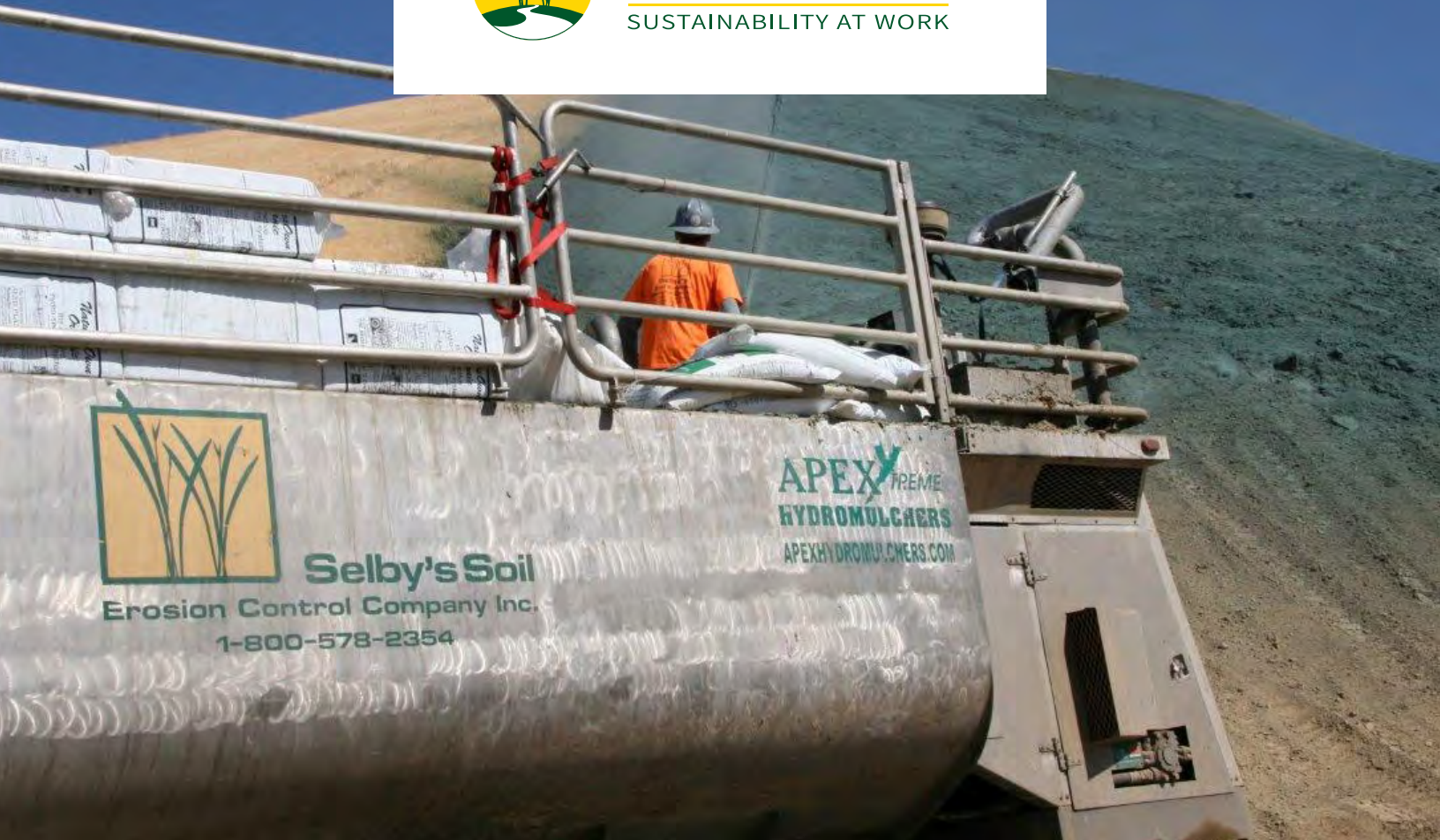
Bob Shults, PE,
QSD, CGP ToR, Caltrans WPCM Trainer



 **VERUX** P 916.930.6000 | F 888.840.5935
www.veruxinc.com | info@veruxinc.com



SSEC Est. 1968
SUSTAINABILITY AT WORK



Creative Solutions to protect your projects.

Contact us today to mitigate containment risks and learn more about our sustainability solutions for your public or private projects.



CORPORATE HQ

150 Lozano Road
Newcastle, CA 95658
800-578-2354



IDAHO

6190 North Sunshine St., Suite E
Coeur d'Alene, ID 83815
509-758-1543

www.SelbySoil.com

CA LIC #1039888 | NV LIC #0070352 | Laborers Union Local #185 | Small Business Certification #2013986
Washington Contractors #SSECAAI802CS | Idaho Public Works Contractors #046045-C-4
Idaho Contractors LIC #RCE-53732

PRODUCT SPECIFICATIONS

SiltSoxx™ NATURAL PLUS

PURPOSE & DESCRIPTION

Filtrex **SiltSoxx™ NATURAL PLUS** is a pre-filled compost filter sock comprised of mesh material and certified FilterMedia™. SiltSoxx NATURAL PLUS mesh is 100% natural and biodegradable, eliminating the need for field removal. Leave in place for ongoing, natural protection.

APPLICATIONS

- Perimeter Control
- Inlet Protection
- Check Dams
- Slope Interruption

FOR ADDITIONAL INFORMATION

Refer to the **Filtrex Catalog** for full item listings.




Refer to **Filtrex Design Specifications** for complete application, design, installation, maintenance, and removal documentation.

FIELD APPLICATION PHOTO REFERENCES



SiltSoxx NATURAL PLUS used as Check Dam.

SiltSoxx NATURAL PLUS Specifications

Product Name	SiltSoxx NATURAL PLUS
Mesh Material Type	All Natural Biodegradable Wood Fiber
Uses	leave on site; long-term
Mesh Opening Size	1/8"
Diameters	5", 8", 12"
Functional Longevity/ Project Duration ¹	up to 18 mo
Tensile Strength (ASTM D4595) ²	MD: 210 lbs TD: 289 lbs
Fill Material	Locally sourced FilterMedia
Mesh Color	 off-white
Mesh Sample	
FilterMedia Sample	

¹Functional longevity ranges are estimates only. Site specific environmental conditions may result in significantly shorter or longer time periods.

²Tensile Strength is based on 12" diameter using ATSM D4595. See Filtrex TechLink #3342 for full tensile strength testing.

SiltSoxx™ are in compliance with most state & federal agencies including:



Filtrex and the branch & leaf logo are Registered Trademarks used by Filtrex International. SiltSoxx and FilterMedia are Trademarks used by Filtrex International.

The information contained herein may be subject to confidential intellectual property of Filtrex International, including but not limited to US Patents 7,226,240; 7,452,165; 7,654,292; 8,272,812; 8,439,607; 8,740,503; 8,821,076; 9,044,795; 9,945,090; and 9,982,409 or Patents Pending and is the property of Filtrex International.

Copyright 2005-2021, Filtrex International, all rights reserved. Unauthorized reproduction prohibited. All statements, product characteristics, and performance data contained herein are believed to be reliable based on observation and testing, but no representations, guarantees, or warranties of any kind are made as to accuracy, suitability for particular applications, or the results to be obtained. Nothing contained herein is to be considered to be permission or a recommendation to use any proprietary process or technology without permission of the owner. No warranty of any kind, expressed or implied, is made or intended.



A 98-year-old wholesaler of erosion control materials and const. fabrics

Open Monday through Friday from 8.00 am – 5.00 pm

Office & Warehouse located at:

440 N. Pioneer Ave. Woodland, CA 95776

Delivery or will call optional

We can cover all of California and the surrounding western states

Business credit available

Please call with any questions or quotes

Gary Malkin – Sales Manager

Ph- 916-893-3790



Wattles



Straw & Coconut
Blankets



Jute Mesh



Silt Fence



Woven & Non-Woven
Ground Cover



Wood Stakes

We also carry: Safety Fence, Visqueen, Sandbags, Gravelbags + Coir Matting

Please check out our website at: WWW.ACMEBAG.COM